

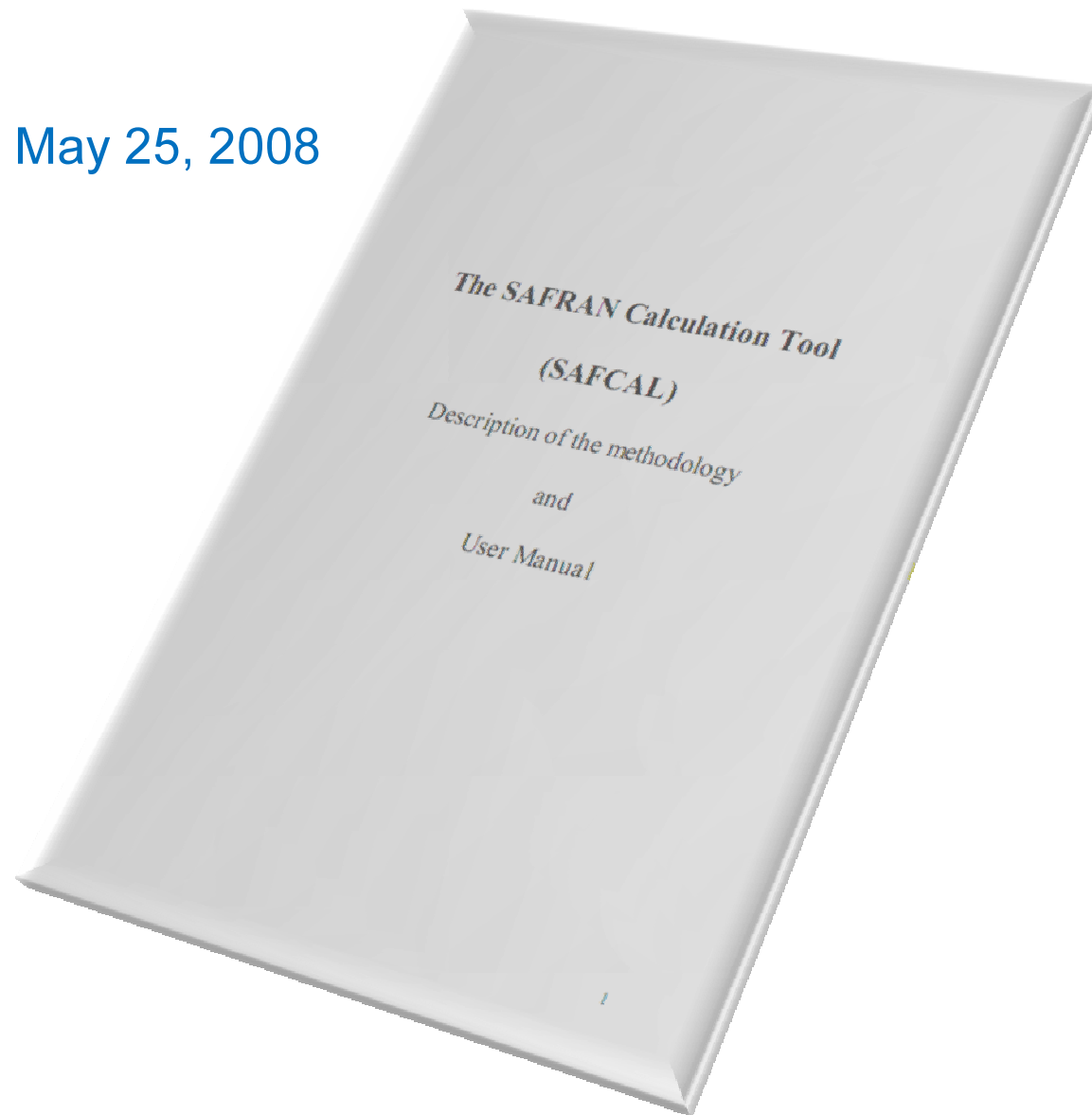
# Calculation Tool WG

SADRWMS 5<sup>th</sup> Plenary Meeting,  
23 June 2008

# WG scope:

- What to calculate;
- How to calculate;
- Assistance in implementation / implementation;
- Assistance in use.


Draft version May 25, 2008



SelectWCsNuclidesAndModelsDialog


---


Shine dose


 Shine dose


---

On-site and off-site impact and fire dose calculation

 On-site impact


 On-site fire

 Off-site impact

 Off-site fire

---

Risk

 Risk

---

Waste components

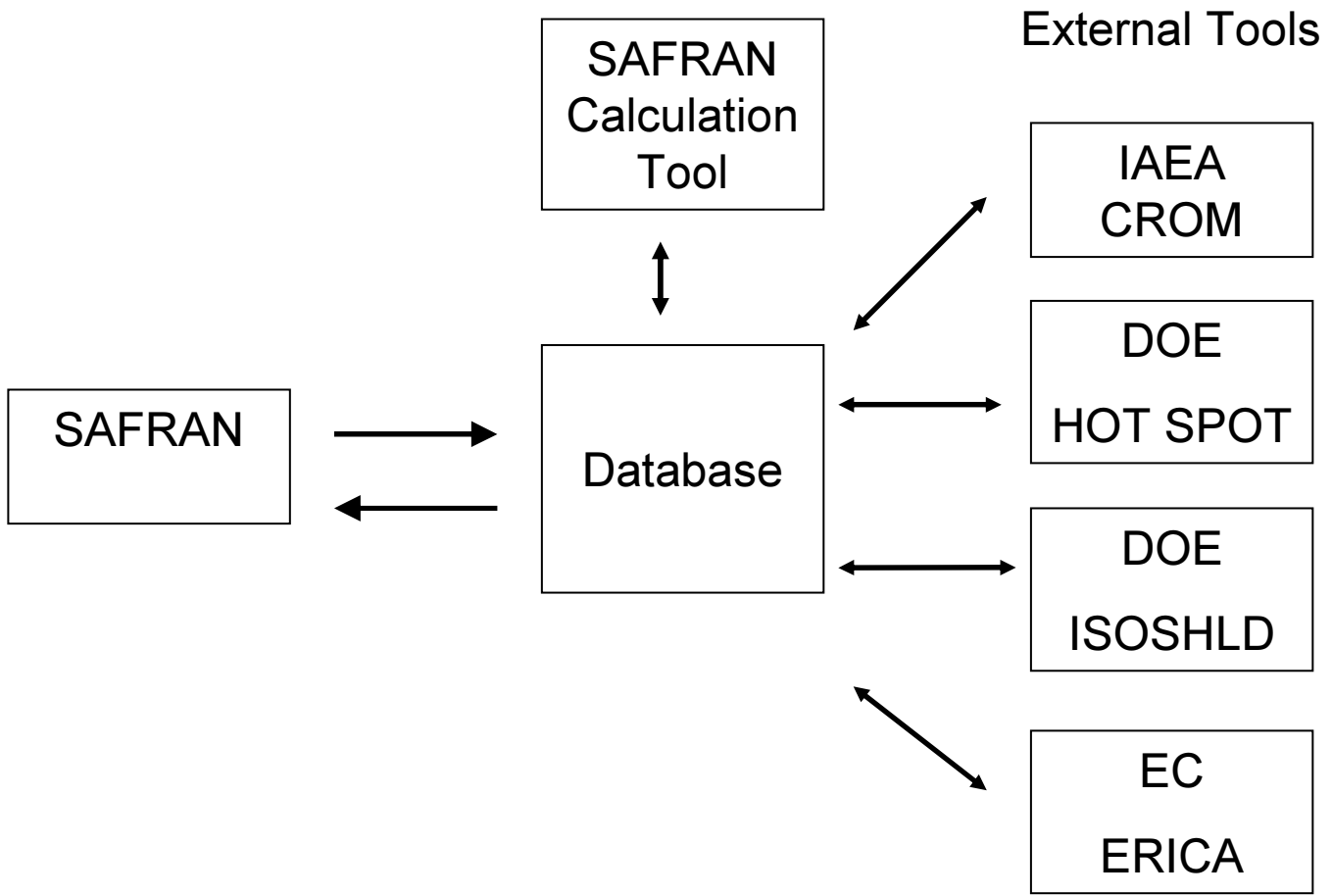
---

Activity as for Thursday June 19, 200

---

Nuclides

<input type="checkbox"/> U-238	<input type="checkbox"/> Th-231	<input type="checkbox"/> Th-228	<input type="checkbox"/> H-3
<input type="checkbox"/> U-234	<input type="checkbox"/> Pa-231	<input type="checkbox"/> Ra-224	<input type="checkbox"/> Pu-239
<input type="checkbox"/> Th-230	<input type="checkbox"/> Ac-227	<input type="checkbox"/> Am-241	<input type="checkbox"/> Sr-90
<input type="checkbox"/> Ra-226	<input type="checkbox"/> Th-227	<input type="checkbox"/> C-14	<input type="checkbox"/> Tc-99
<input type="checkbox"/> Pb-210	<input type="checkbox"/> Ra-223	<input type="checkbox"/> Co-60	<input type="checkbox"/> U-233
<input type="checkbox"/> Po-210	<input type="checkbox"/> Th-232	<input type="checkbox"/> Cs-137	
<input type="checkbox"/> U-235	<input type="checkbox"/> Ra-228	<input type="checkbox"/> Eu-152	



# What now?

- Review & discuss Calculation Tool Manual
- Discuss tasks
- Define priorities
- Share job
- Define time points

# Review of Calculation Tool Manual

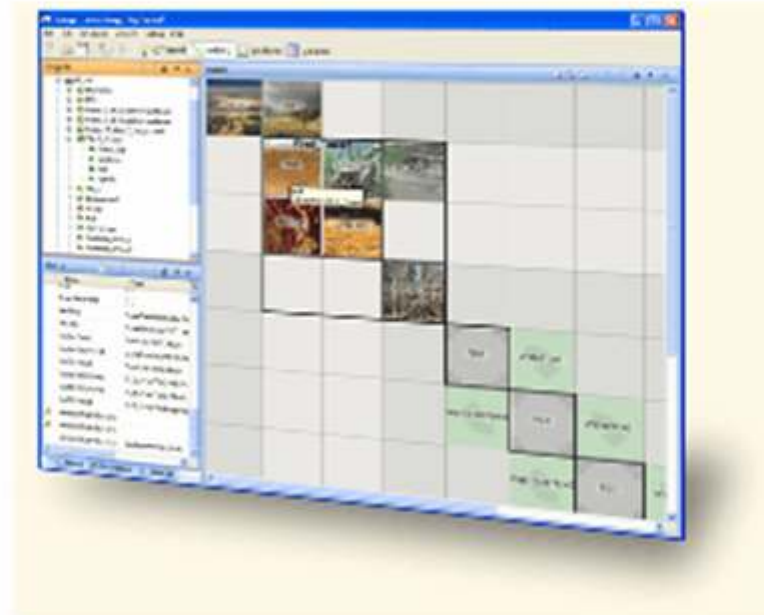
- Are there any comments / proposals for:
  - Structure of document?
  - Models selected?
  - Models described?
  - Data bases?
  - Dependences of parameters?
- Are there any models missing?
- Are there any missing in approach?

# Ways to go

- Specifications for models to be implemented;
- May 2008 meeting decision – connect Ecolego

## Simulation Modelling and Risk Assessment Software

**Ecolego** is a powerful and flexible software tool for creating dynamic models and performing deterministic or probabilistic simulations. Ecolego can be used for conducting risk assessments of complex dynamic systems evolving over time with any number of species. Ecolego has specialised databases and other additions designed for the field of radiological risk assessment.



The graphical user interface helps the user to define and manage building blocks, parameters, species and simulation settings. Ecolego also helps to create reports, to plot simulation results, to perform probabilistic simulations and sensitivity analysis.