

Figure no. 4.1 Mechanical saw - HILTI WSR 1200-PE



Figure no. 4.2 Diamond drill equipment for concrete core extraction - DD200



Figure no. 4.3 Device for sampling through stamping, type TRUMPH Nibbler N-1000-0



Figure no. 4.4 Discs for smears sampling

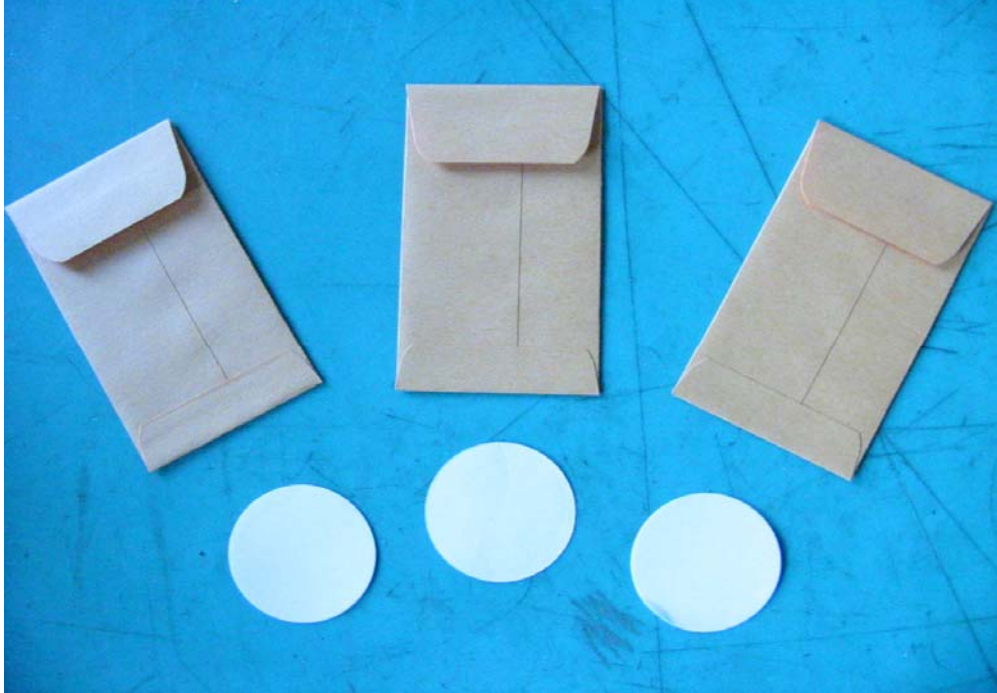


Figure no. 4.5 Vacuum-cleaner with HEPA- NILFISK filter



Figure no. 4.6 Universal Monitor, LB 123 “UMo”, type EG&G BERTHOLD



Figure no. 4.7 EBERLINE E-600 Monitor



Figure no. 4.8. EBERLINE Monitor for Beta aerosols, type AMS-4



Figure no. 4.9 γ Portable Spectrometer - ORTEC, DigiDART





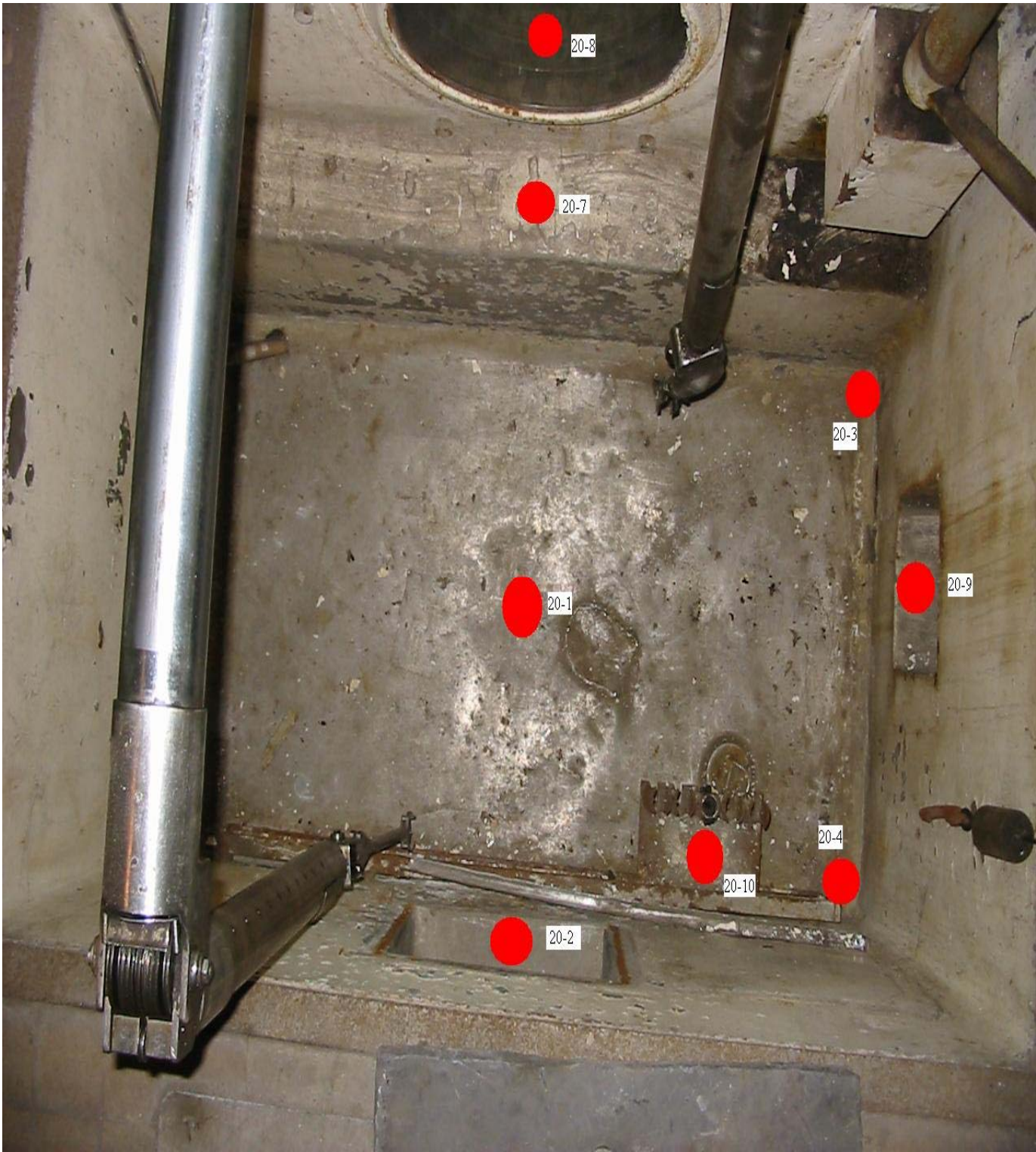
Technical Meeting
Bulgaria 4-6 Dec 2007,
Ransko

24

Error! Objects cannot be created from editing field codes.

Error! Objects cannot be created from editing field codes.

2. Room 20



7. 21

7.21. Photos from uranium processing room 44

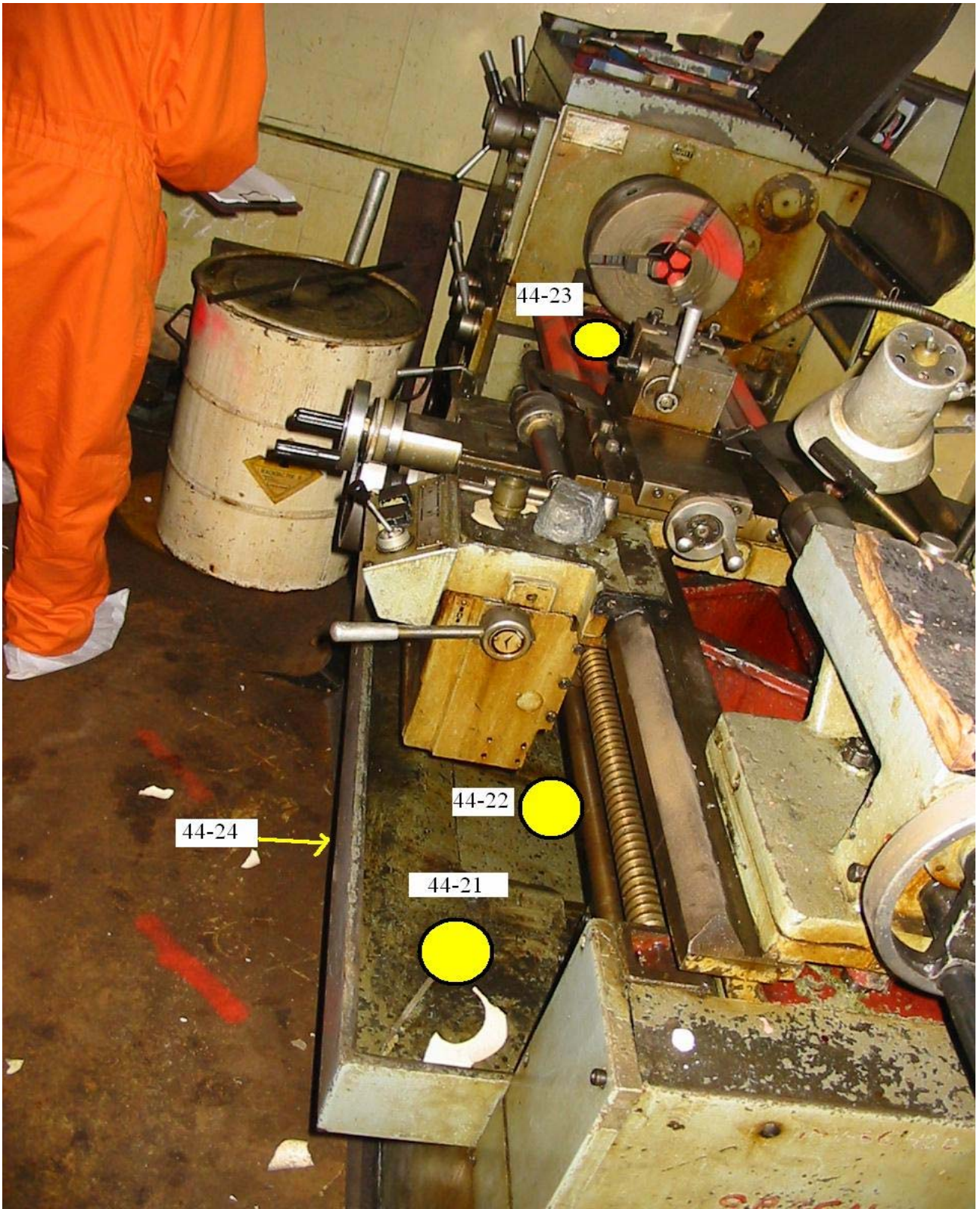


Photo 1- Upper side of the Reactor Block

Location of measurement points

