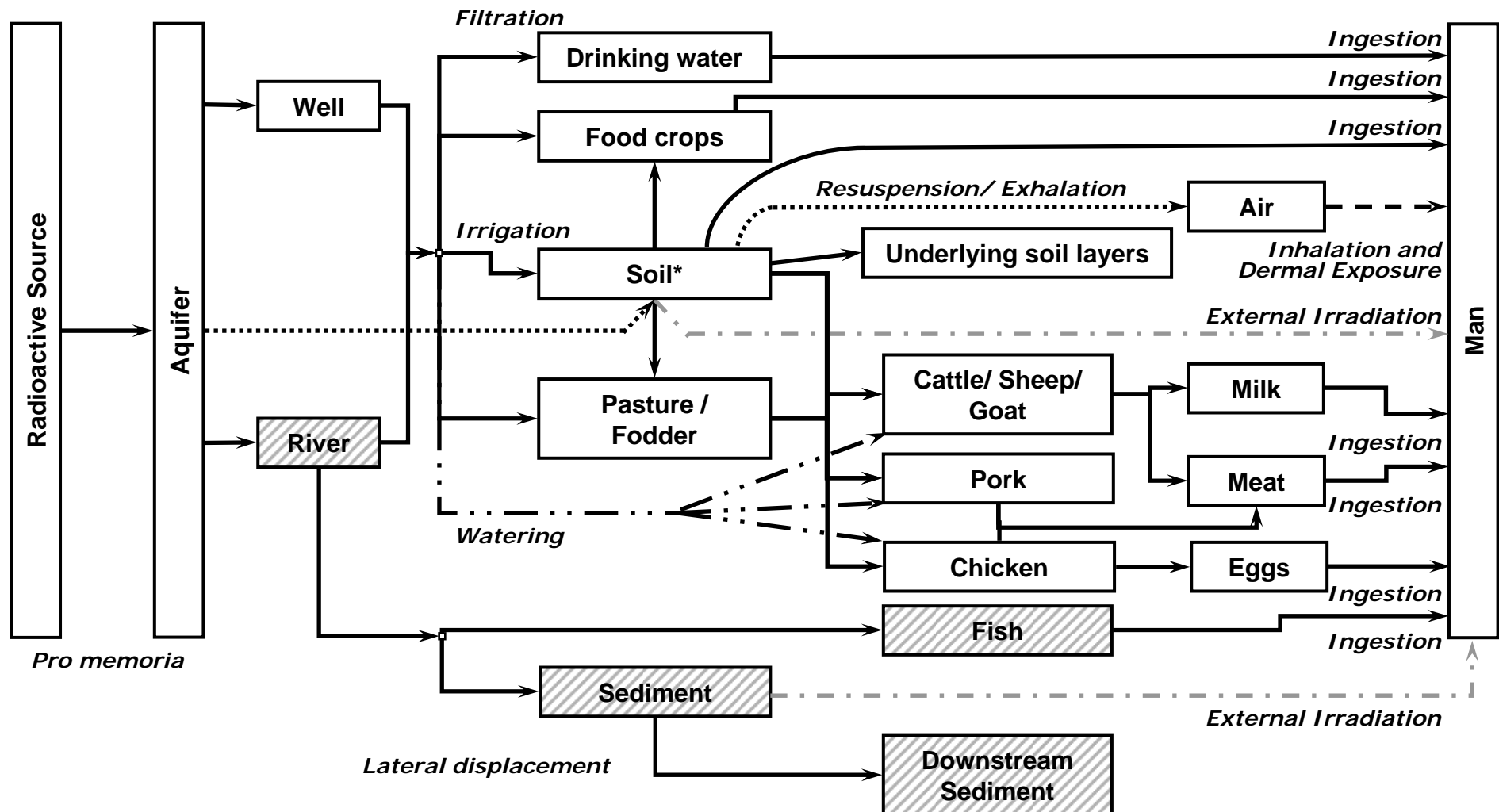


# Conceptual model



\* Including erosion and bioturbation

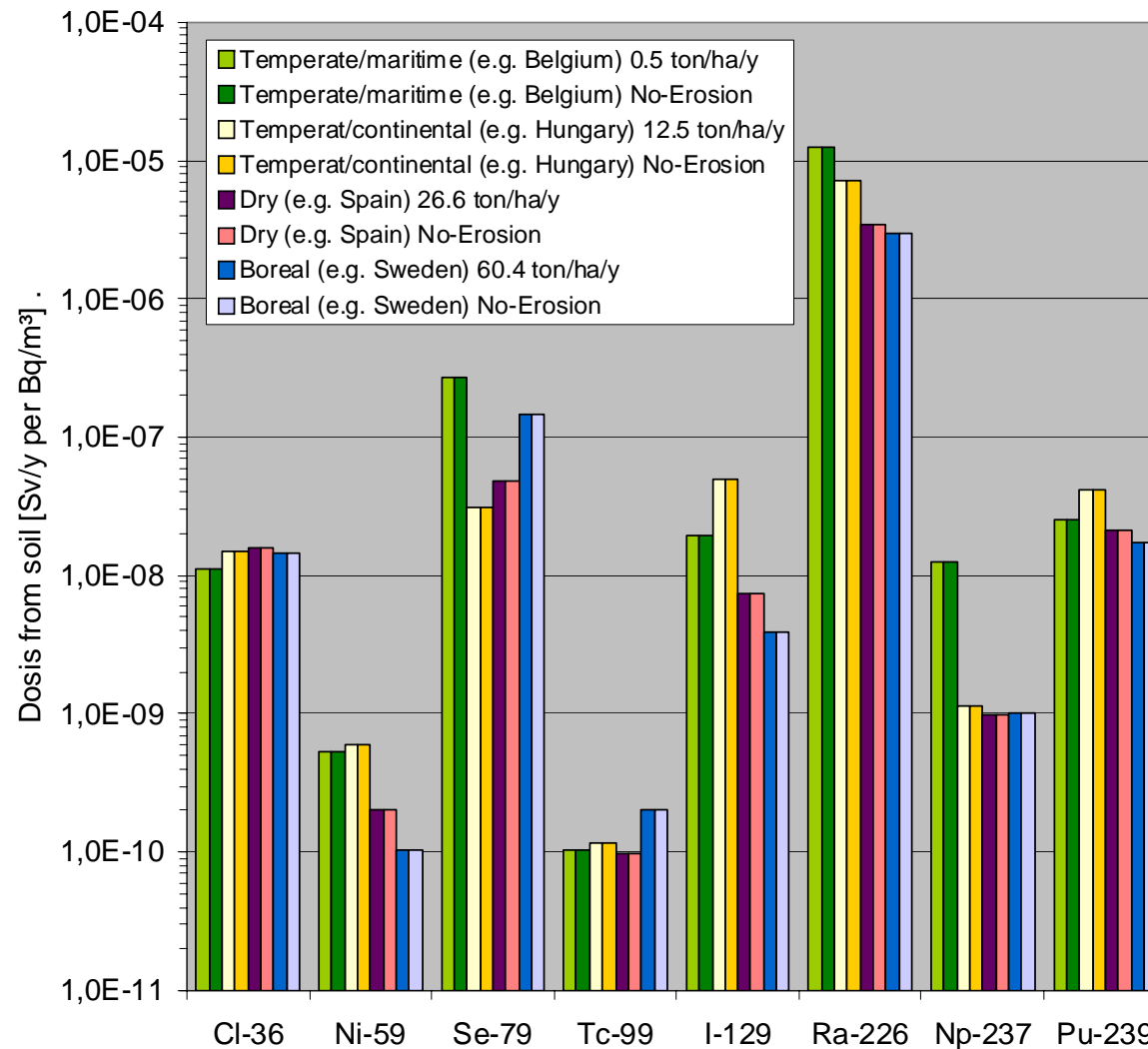
# Data from BioMoSA were used

---

- Data for adults
- Focus on nuclide independent parameters
- Human habits
  - Human ingestion rates
  - Irrigation rates
- Animal ingestion rate



# Some results for the EMRAS II Waste Group (Soil)



# Some results for the EMRAS II Waste Group (Well)

