

# General Assessment Methodology Process

Juan Carlos Mora and Richard O'Brien, for  
Working Group 2 "Legacy sites and NORM"  
draft

# Site characterisation methodology

- See Rodolfo Avila's plenary presentation (next slide)

# Ideas(1)

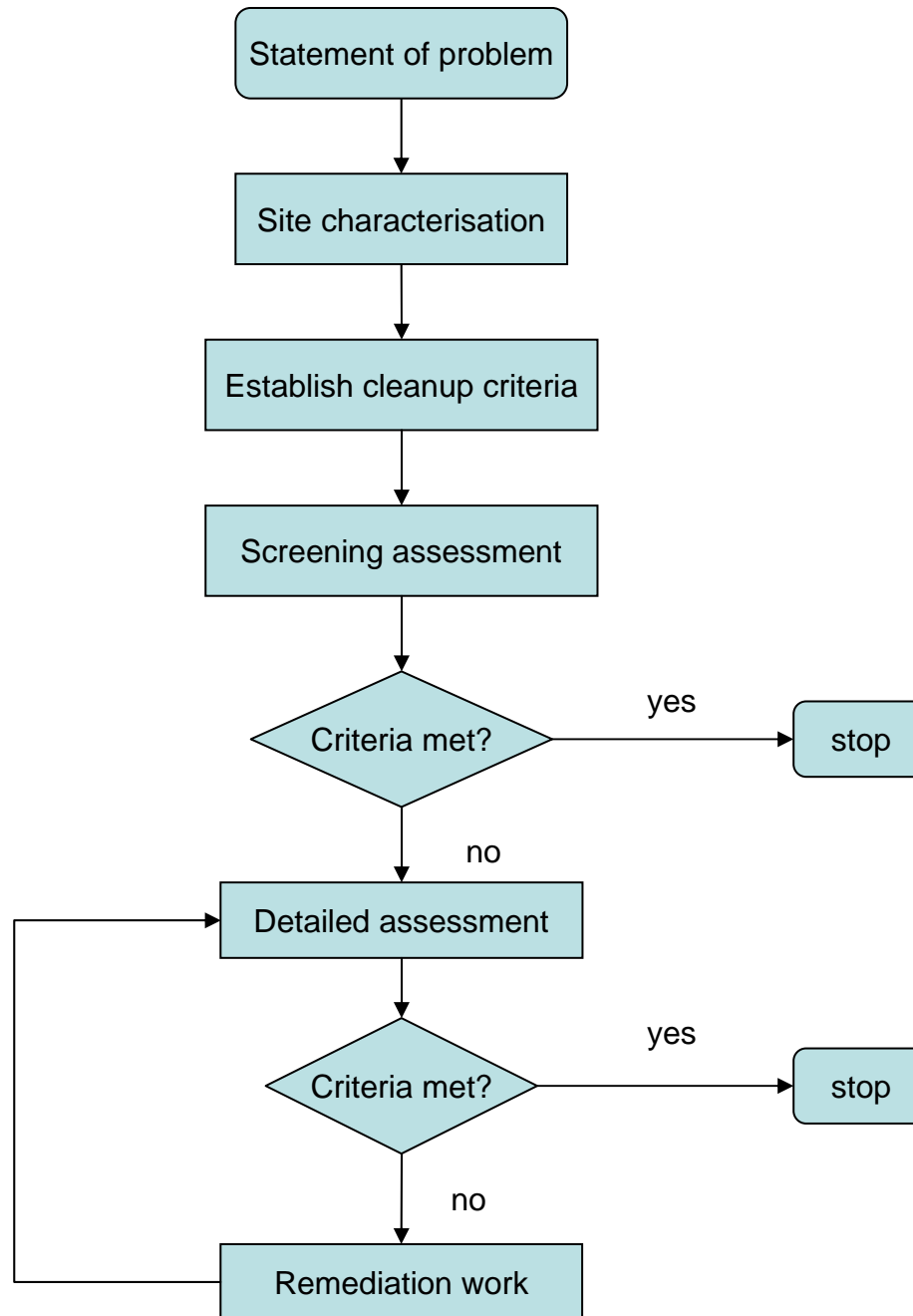
- Clearly define the aim of the methodology
- Define the overall problem/objective
- Release from regulatory control
  - Restricted
  - Unrestricted
  - Land use
- Site characterisation
  - Operational
  - Legacy
  - Non-radiological hazards
  - Pathway analysis
  - Monitoring
- Cleanup criteria
  - Optimisation and/or limitation of risk

# Ideas(2)

- Dose assessment
  - Important to understand site-specific processes and models used
  - Site-specific data used where possible
  - Models
    - Which models are available
    - What data do they need
    - Different models need different data
    - Refer to guidance on which models to use (IAEA document)
  - Need to assess present and future doses
  - Effects of different remediation processes

# Ideas(3)

- Tiered approach to assessment
  - Screening assessment
  - Detailed assessment if necessary
- Look at IAEA Nuclear Energy Series NW-T-3.3  
“Integrated approach to planning the remediation of sites undergoing decommissioning”
- Keep needs of different groups as generic as possible
- Refer to decision-makers rather than regulators and operators
- Don’t tell decision makers what to do
- Guidance/recommendations – not mandatory



**Site  
characterisation  
methodology**

