

IRSN

INSTITUT
DE RADIOPROTECTION
ET DE SÛRETÉ NUCLÉAIRE

Faire avancer la sûreté nucléaire



Système de management
de la qualité IRSN certifié

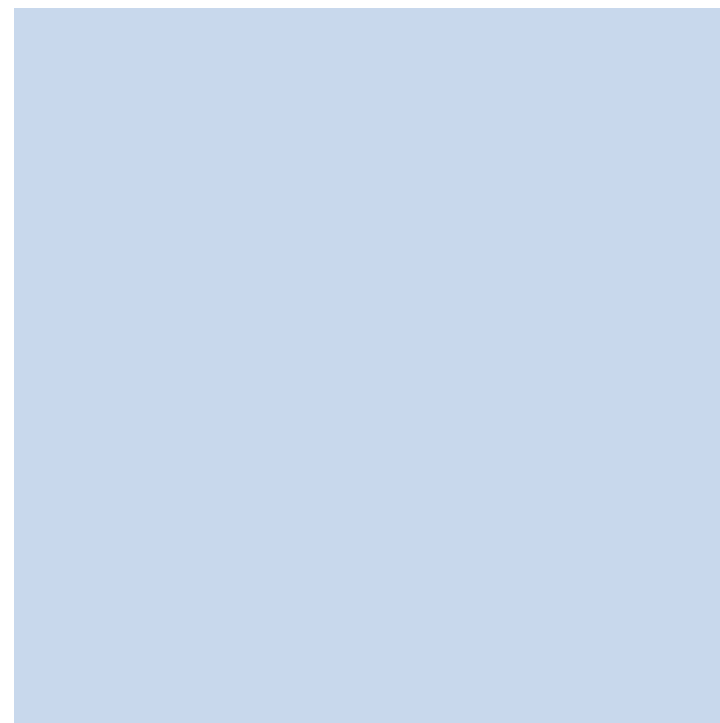
Overview of the monitoring data around the Bellezane site potentially usable for modelling

Thierry DOURSOUT

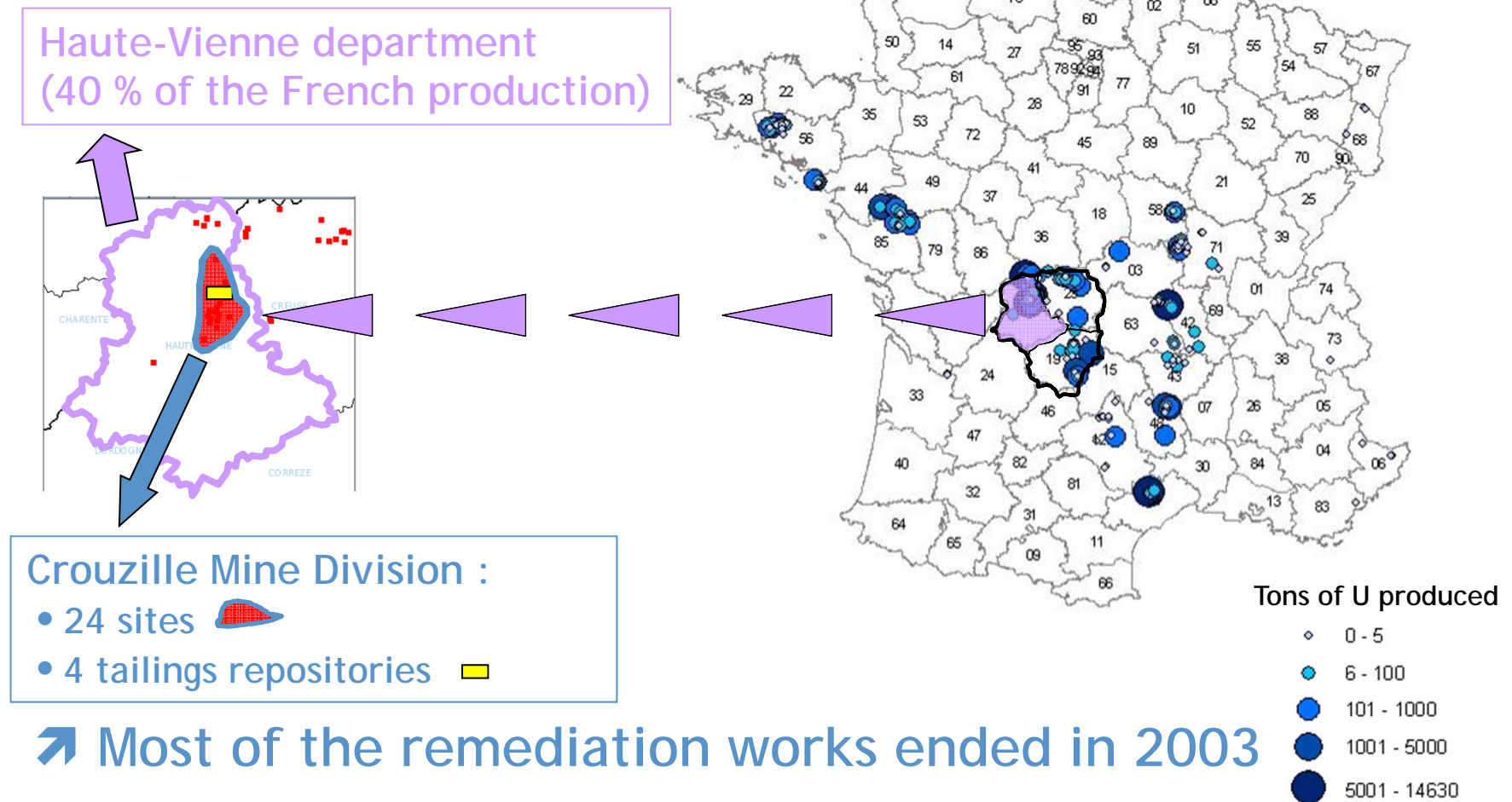
EMRAS II WG2

24-28 January 2011

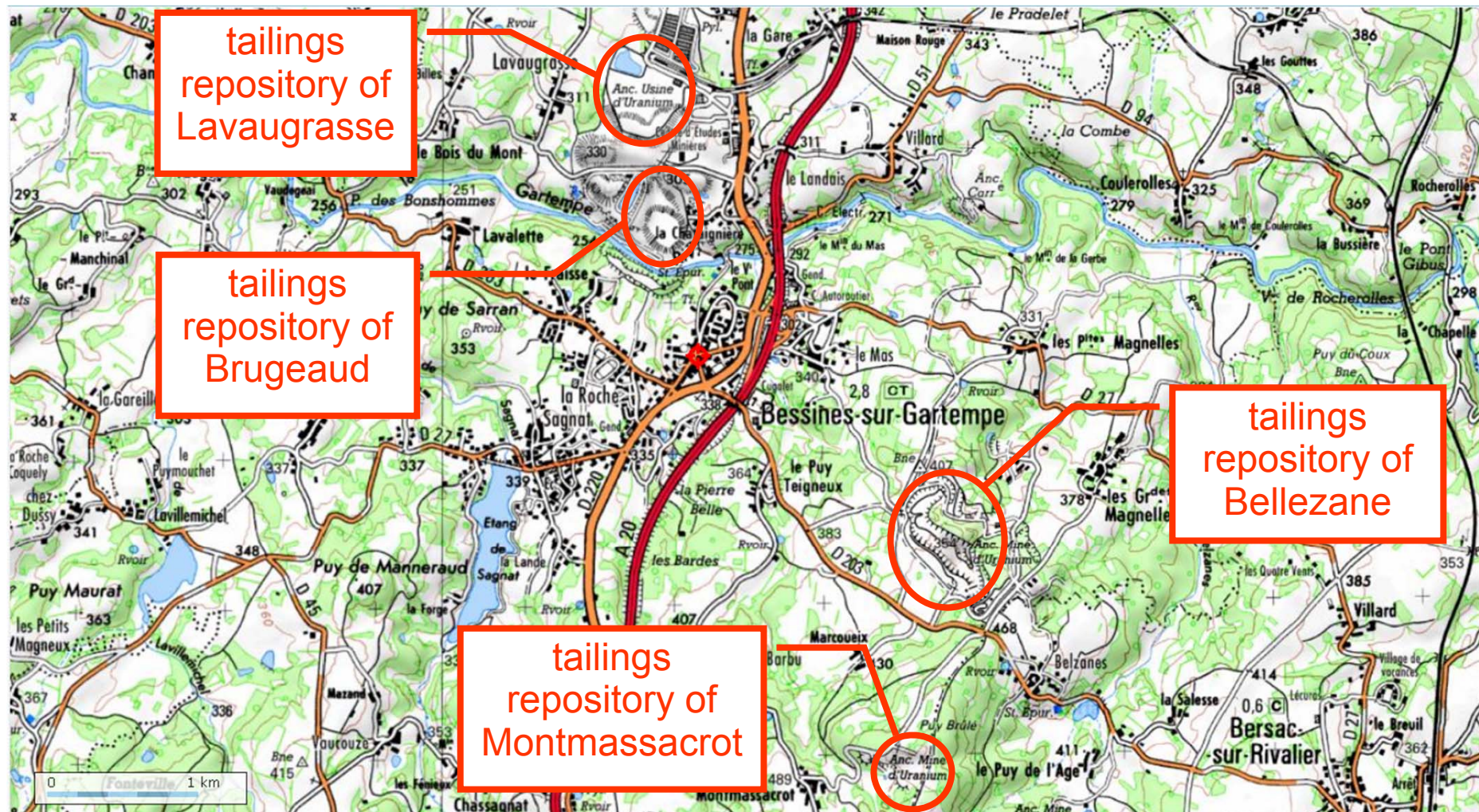
Vienna



Localization of uranium mining sites in France

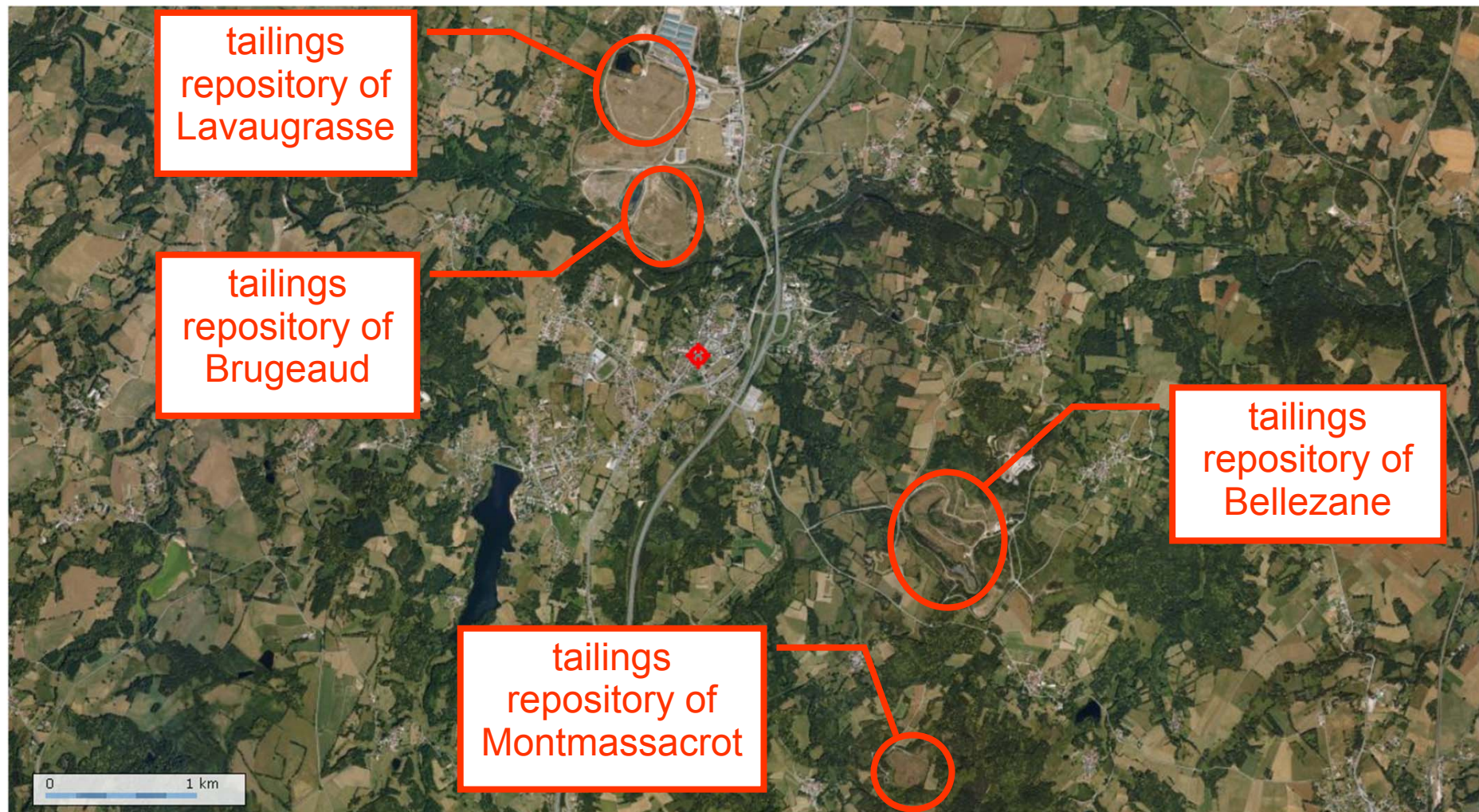


Localization of the 4 tailings repositories of the Crouzille Mine Division



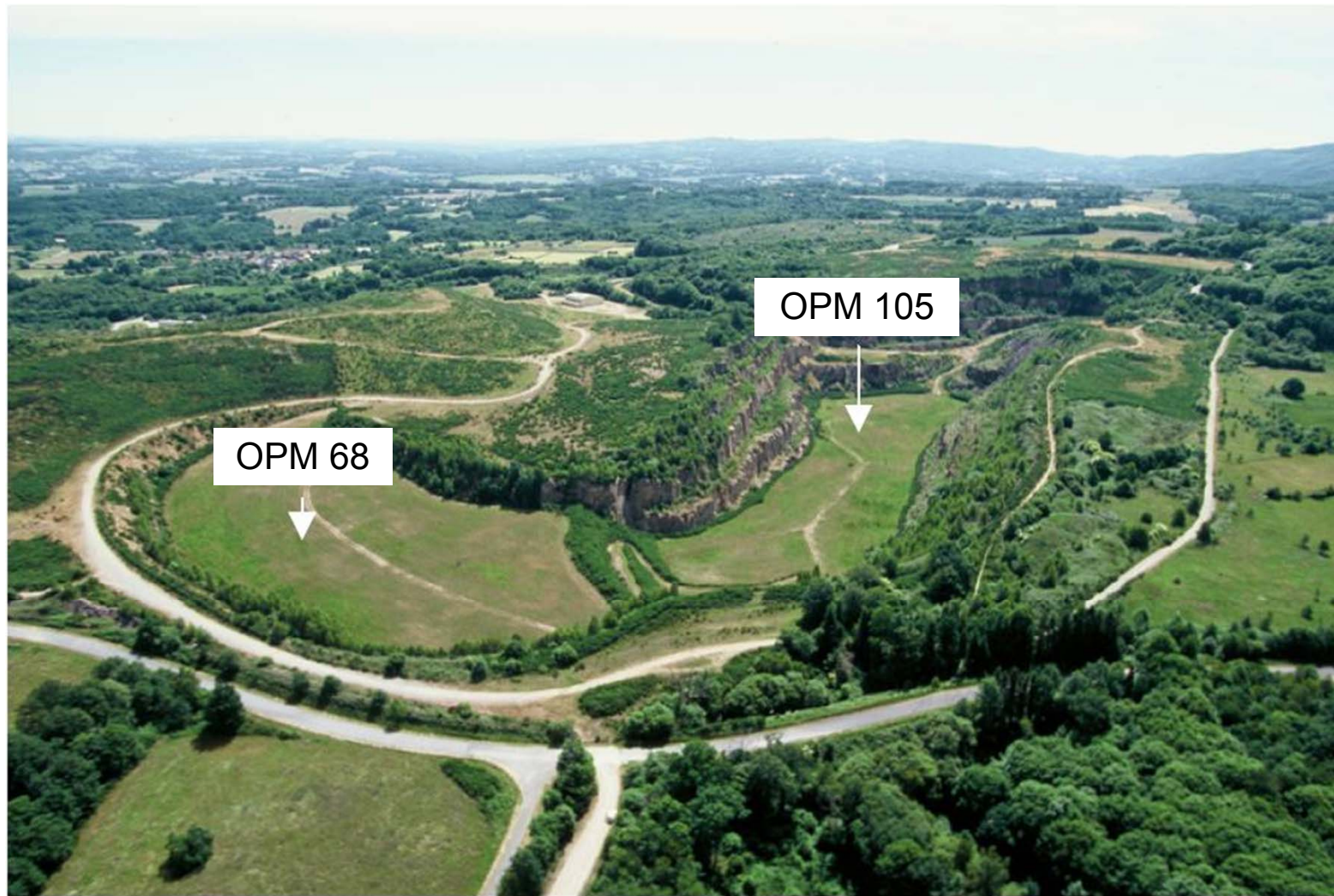
Overview of the monitoring data around the Bellezane site
potentially usable for modelling - 25 January 2011

Localization of the 4 tailings repositories of the Crouzille Mine Division



Overview of the monitoring data around the Bellezane site
potentially usable for modelling - 25 January 2011

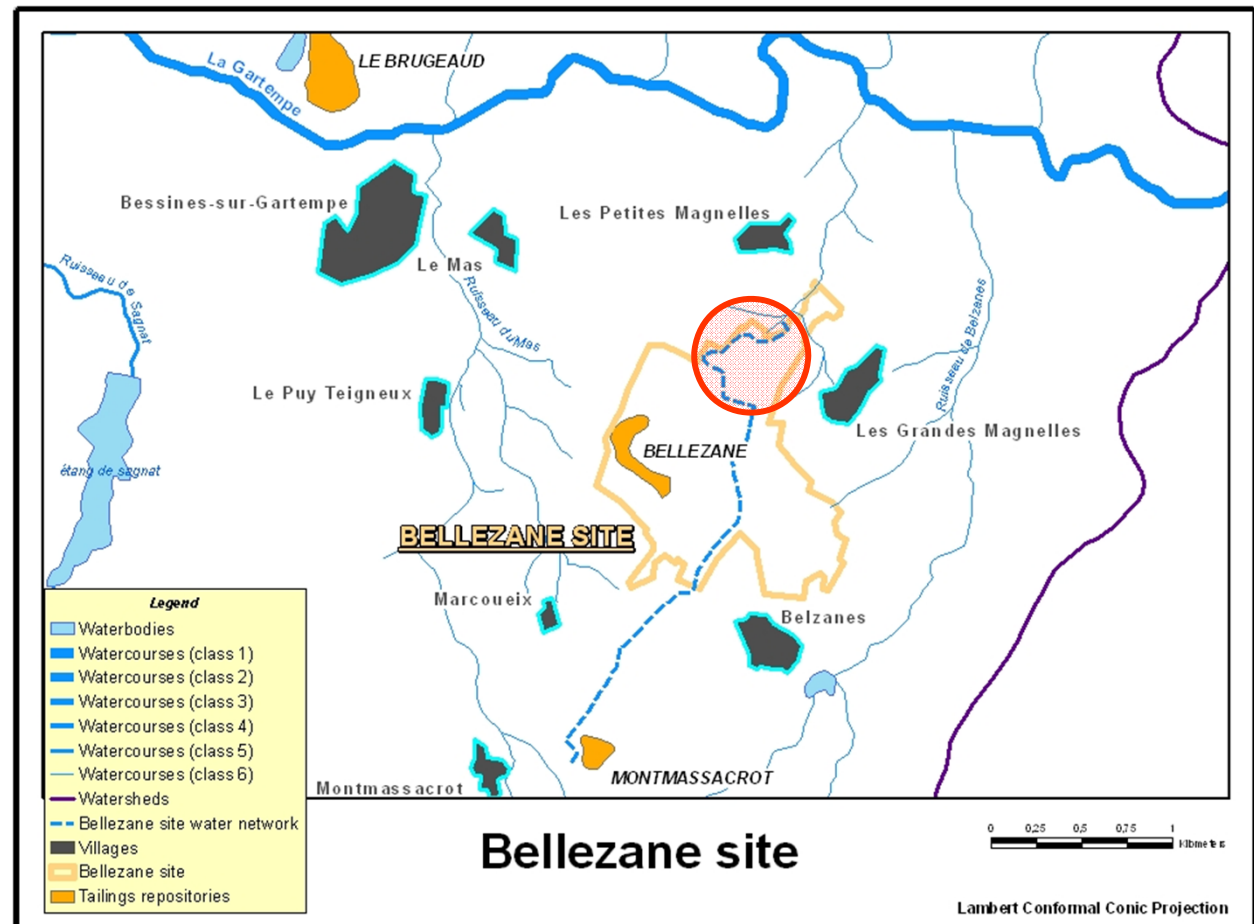
Bellezane site



Overview of the monitoring data around the Bellezane site
potentially usable for modelling - 25 January 2011

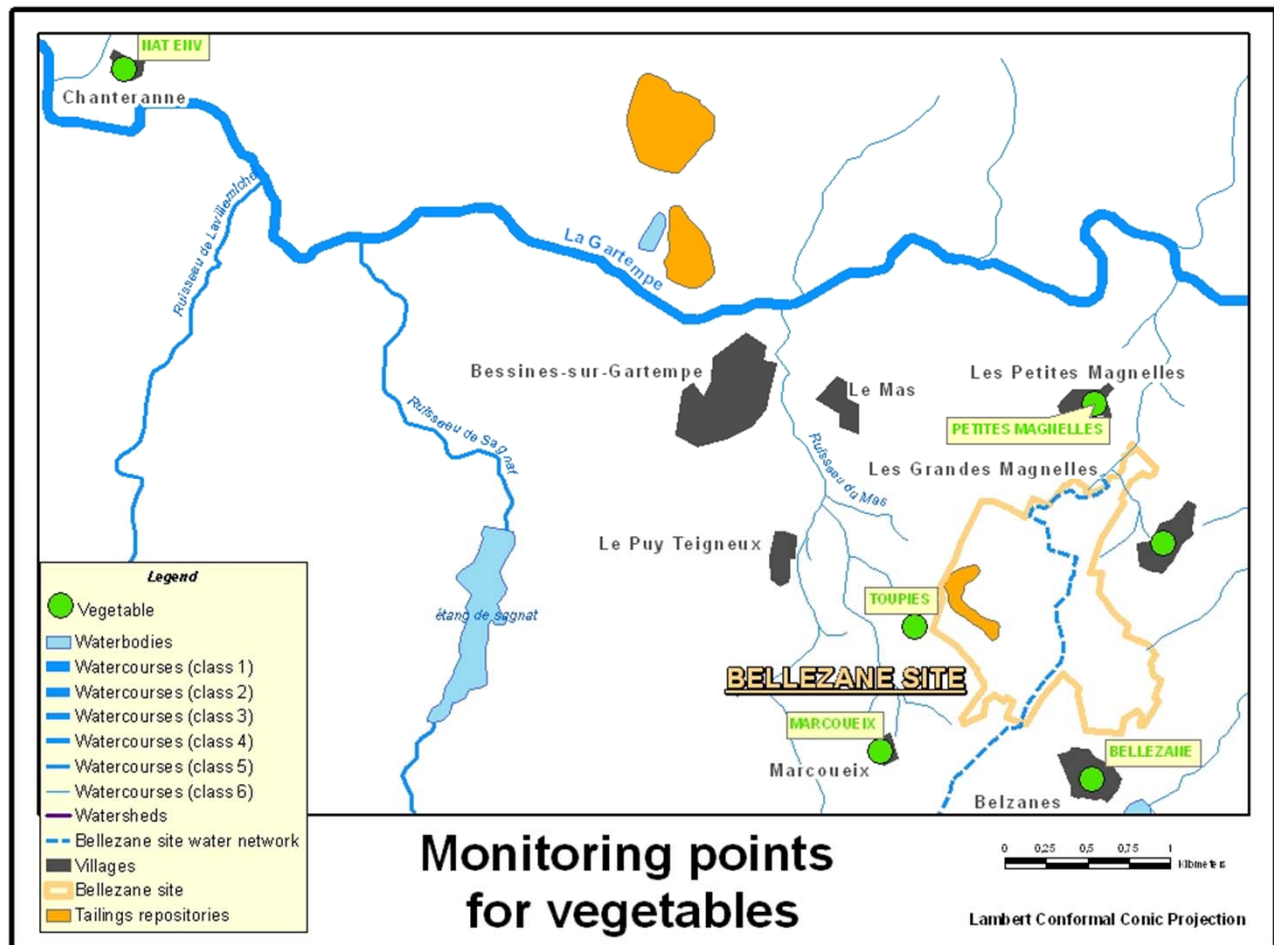
Features relative to the Bellezane site and its environment

- 1 river and 3 streams
- A water connection, before treatment, with another tailings repository
- Several villages scattered around the site



Dataset available from the environmental follow up

- Groundwater
- Surface water
- Air
- Fish
- Sediment
- Milk
- Soil
- Vegetable



Highlights/warnings

- No data selected for animals
- Most data refer to the period 1994-2006
(Bellezane site remediation works ended in 1996)
- Almost all the values provided represent an average over a whole year
- Many values under the DL... with a DL which evolved over time !
- Few data for several monitoring points

Picture of the treatment basins on the Bellezane site

