

The International Project on

SAFETY ASSESSMENT DRIVING RADIOACTIVE WASTE MANAGEMENT SOLUTIONS

SADRWMS



DIFFERENCES IN THE FIELD OF SAFETY ASSESSMENT BETWEEN DISPOSAL AND PREDISPOSAL FACILITIES:

- **Focus on operational safety of predisposal radioactive waste management activities and facilities**
- **Active involvement of operational staff**
- **Generic structure of the safety assessment methodology developed and used in the ISAM and ASAM projects used as starting point, differences highlighted**

OBJECTIVES OF THE SADRWMS PROJECT

- 1. Develop harmonised common approach to safety assessment for radioactive waste management**
- 2. Use of safety-assessment methodology for radioactive waste management in a proportionate & effective manner**
- 3. Early passivity and hazard reduction**
- 4. Holistic and integrated approaches to safety and security considering interdependencies**



ORGANISATION

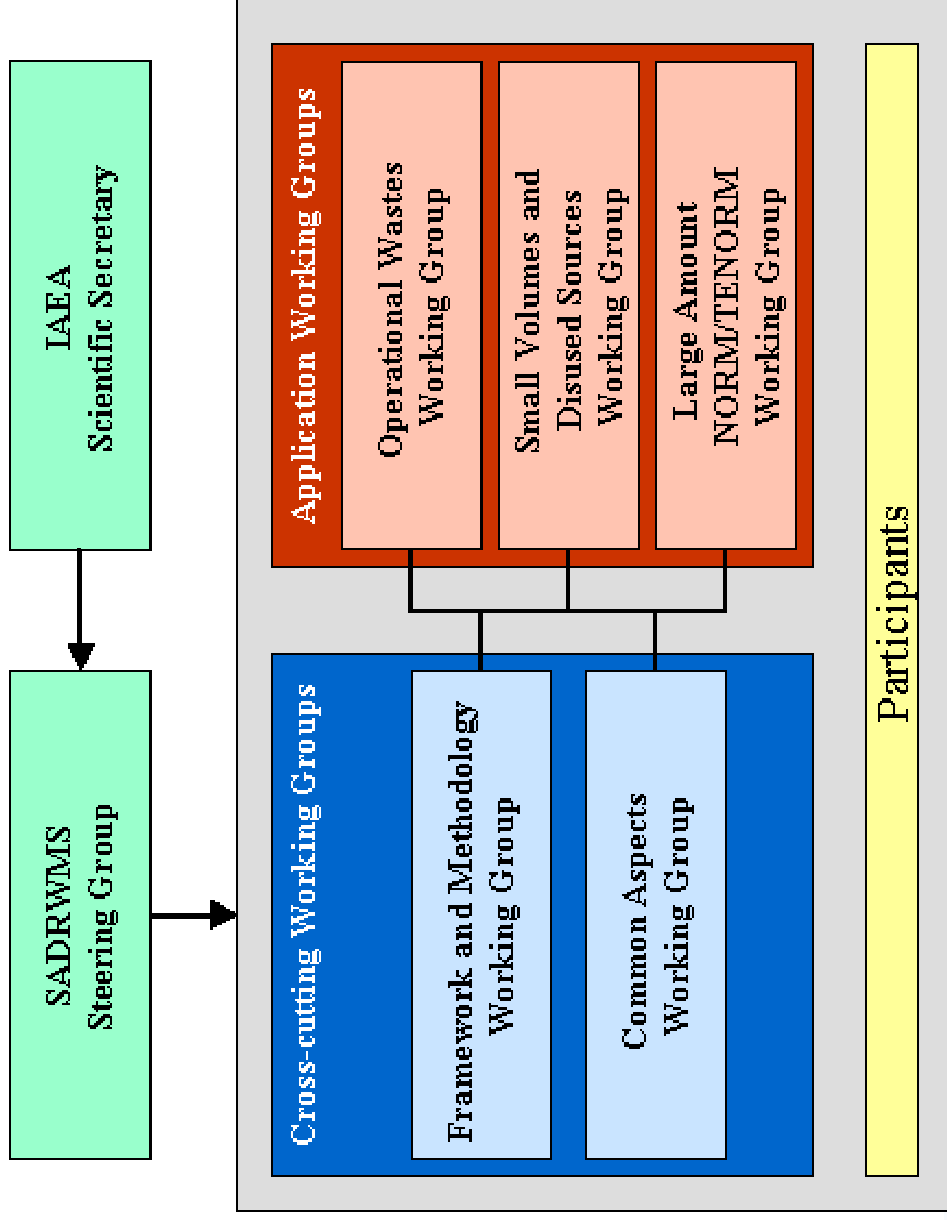
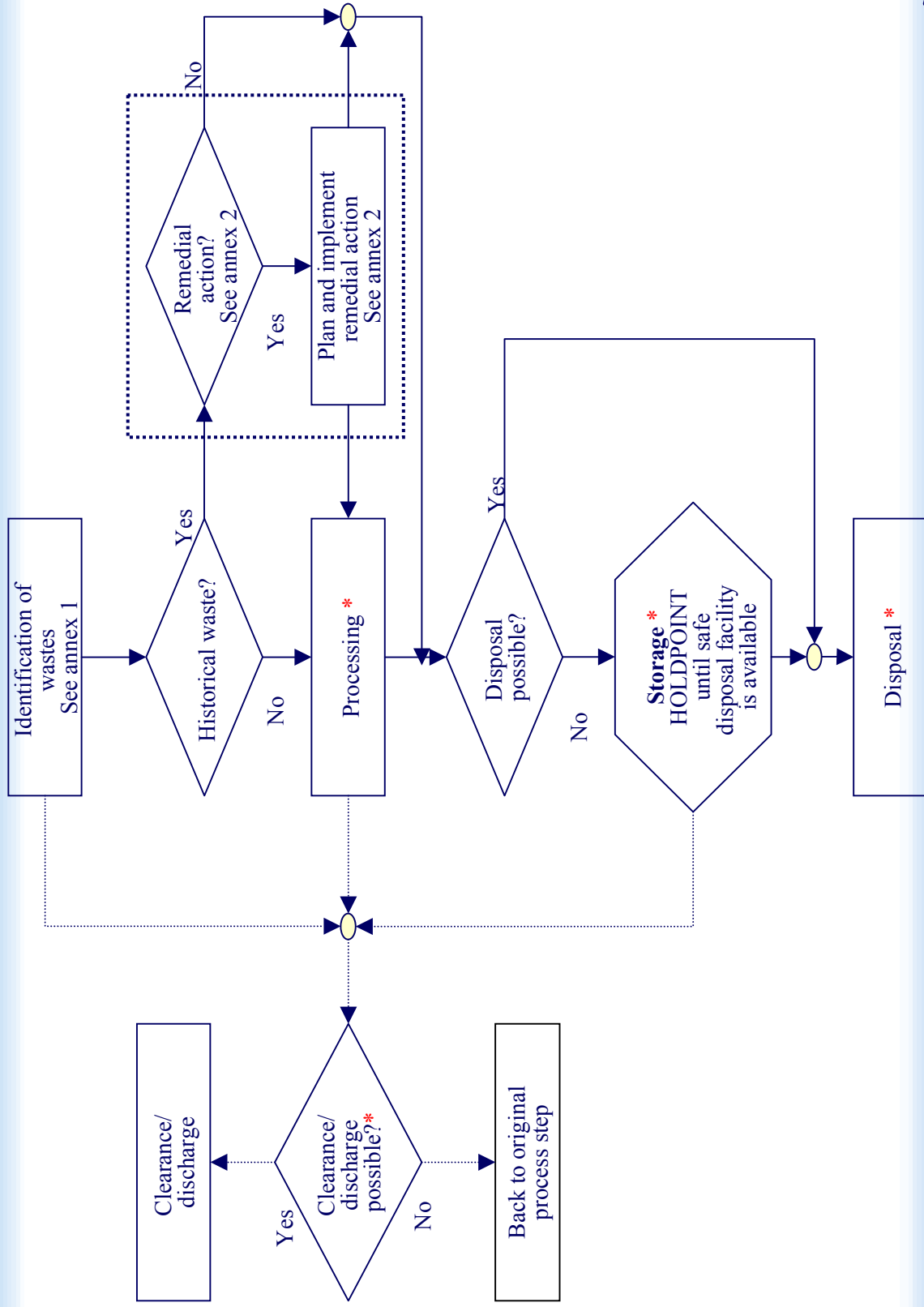


Fig. 1: Overall Process



WORKING PLAN FOR 2006

- ✓ **Input reports from two groups CROSS CUTTING WORKING GROUPS**
- ✓ **Finalise questions (sorting/eliminating/adding)**
- ✓ **Compile draft report (one)**
- ✓ **Define draft specifications for software**
- ✓ **Identification and testing of methodologies needed in the different safety assessments**
- ✓ **Finalise specifications**
- ✓ **Develop interactive software based on flow charts (prototype)**
- ✓ **Draft software available**
- ✓ **Test software and finalise report**
- ✓ **Working group agree test cases (3)**

