

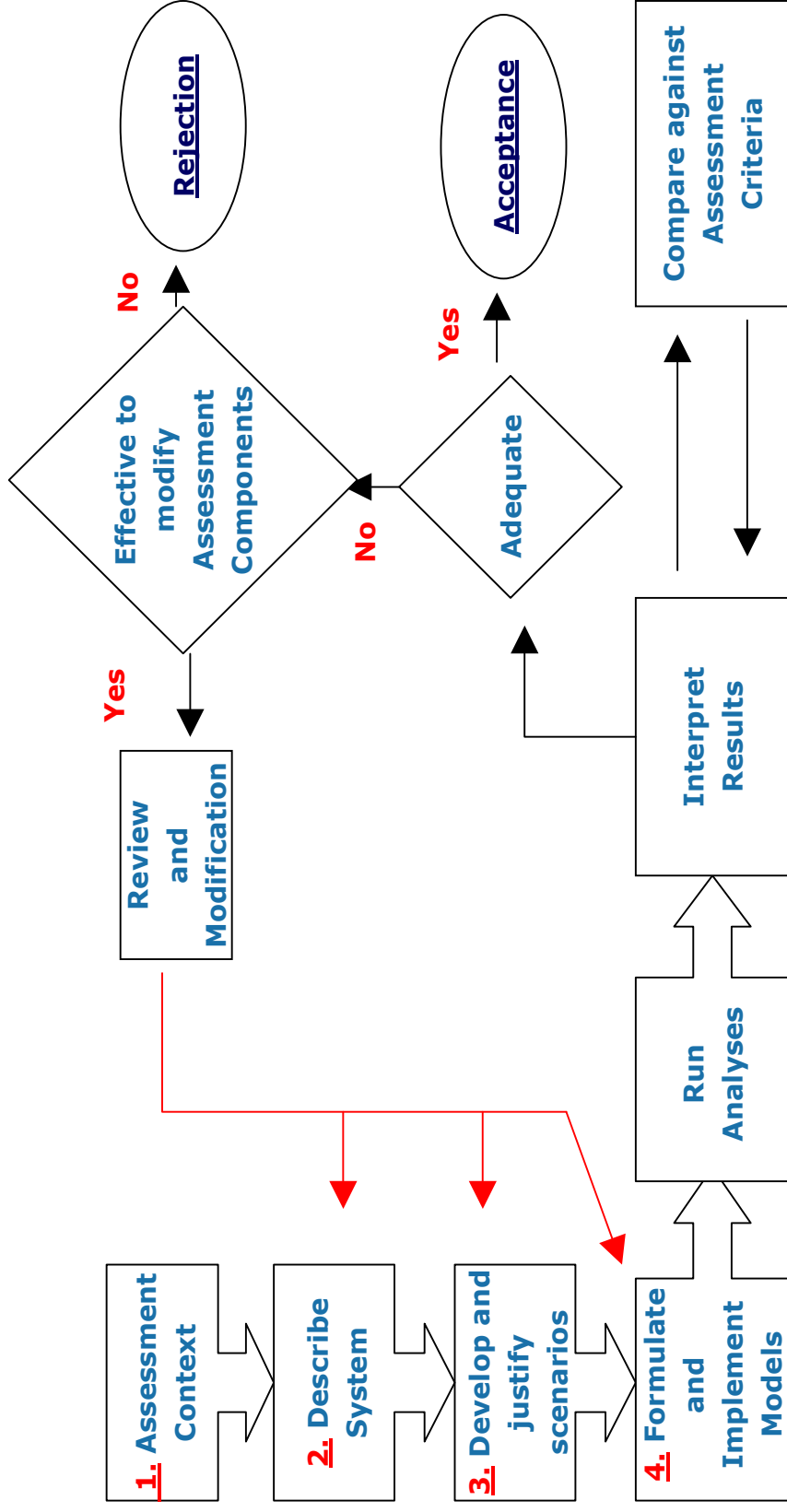
International Atomic Energy Agency

ASAM Project

[**Application of **Safety **Assessment **Methodology for Near-**
Surface Radioactive Waste Disposal Facilities]******

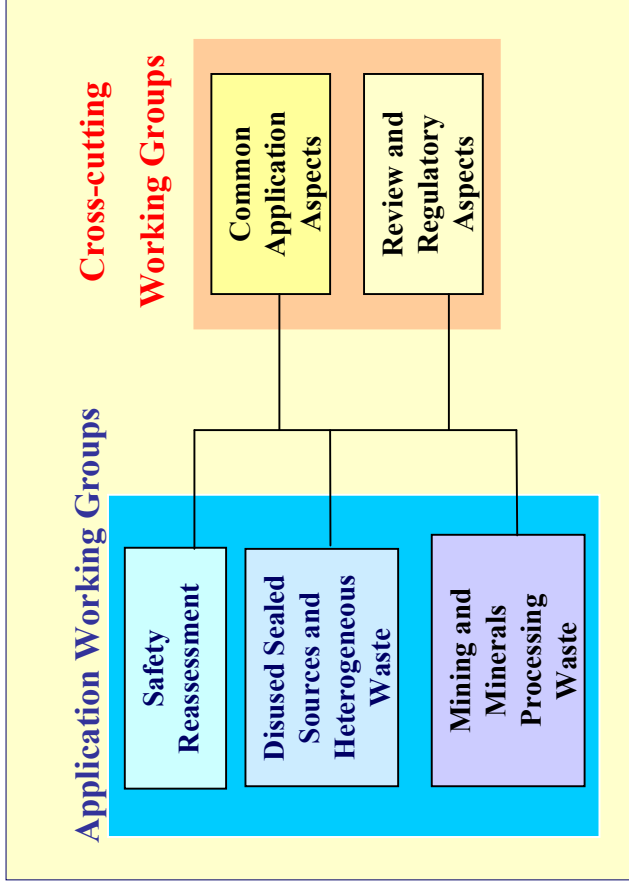
Presented in
November 2005

ISAM METHODOLOGY



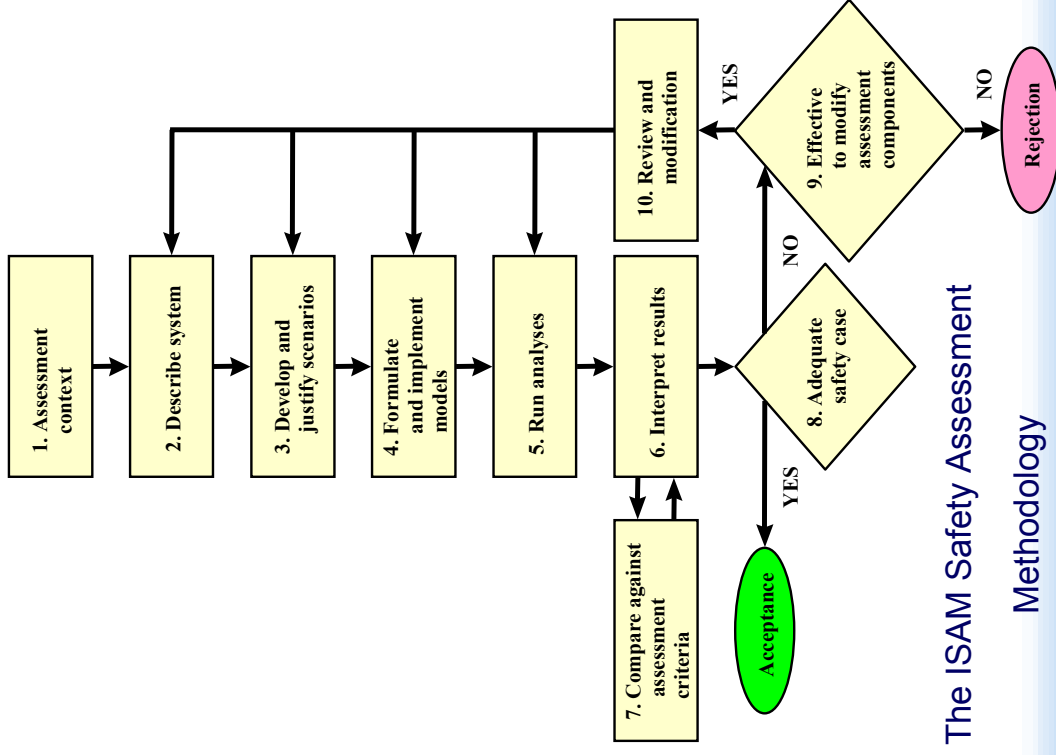
Organizational Structure and History of ASAM

- 11 – 15 Nov 2002:
1st RCM
- 2 – 6 Jun 2003:
Joint ASAM WG Meeting
- 5 – 13 Feb 2004:
2nd RCM
- 2005 group meetings
- 27 – 31 March 2006:
3rd RCM



Today's Status (1)

- Application groups
- Test cases work carried out
- Conclusions being formulated
- Consideration being given to common aspects



The ISAM Safety Assessment

Methodology



Today's Status (2)

- Cross cutting groups**
 - **Common aspects - 5 position papers:**
 - **Assessment of disruptive event and process**
 - **Engineering barrier**
 - **Roles of conservatism and realism**
 - **Decision support for safety assessment activities**
 - **Undertaking assessments with little site-specific information**
 - **Review and regulatory – 2 draft Safety Reports:**
 - **Safety case**
 - **Regulatory review**



Future Actions

- **A “Synthesis document” of all WGs outcomes are being prepared in order to:**
 - Summarize the ASAM work (details will be in a set of supporting documents),
 - Make recommendations on use of the methodology,
 - Highlight further development required, and
 - Provide a discussion basis for the 3rd RCM.
- **3rd RCM to agree on finalization of documents and programme of further work.**

